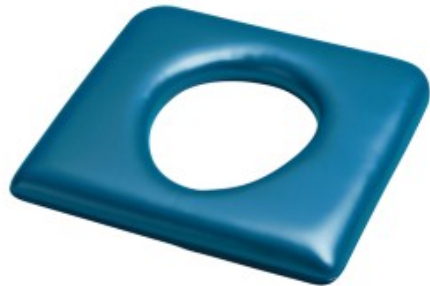


## K Care URETHANE Commode Seat Padded - Closed



- High quality urethane padded seat with a closed front for personal cleaning and toileting access
- Supplied with plastic seat runners for easy attachment and removal during cleaning of the seat and commode
- Available in blue
- Seat Height: 40 mm



### Compliance

AS/NZS 3973:2009

### Warranty Information

- 1 Year

Code	Display Name	Seat Depth	Seat Width
BTC075500	Closed Front Commode Seat - 440 mm Wide	430 mm	440 mm