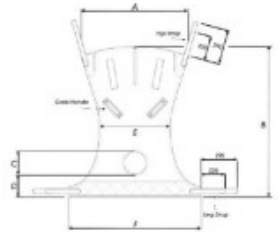


## Invacare Hammock Sling



	M	L
A	890	1020
B	N/A	N/A
C	930	330
D	1010	1070
T	1170	1260
CODE	Fabric: 17335	N/A
	Mesh: 17236	17229



- The sling provides support and security for lifting from a bed or the floor
- The patient must roll on to, and off, the sling
- When fitted full head support is provided
- Recommended for single or double lower limb amputees and lifting from the floor, and because weight is not taken by the patient's thighs

### Warranty Information

- 1 Year



**ndis**

**Item Code:**

05\_123603164\_0105\_1\_2

**Sling – Composite:**

05\_421\_0105\_1\_2

Click [here](#) for more information

**Compliance**

AS/NZS ISO 10535:2011

Code	Display Name	Safe Working Load	Material
LSS375015	Invacare Hammock Mesh - Medium	205 kg	Mesh