



EVOKE 2 YOUTH WHEELCHAIR

The Aspire Evoke 2 Youth wheelchair is highly adjustable, lightweight, easy folding and proportionally designed to enable a personalised fit for youths and smaller adults. A comprehensive range of compatible accessories is available for increased independence and enhanced clinical outcomes.



CRASH TEST
APPROVED
AS/NZS 3696.19

1 YEAR WARRANTY
Components

2 YEARS WARRANTY
Frame



Australia
1300 133 120 | aspirecare.com.au

United Kingdom
01622 541235 | aidacare.co.uk

Folding Lightweight Design

For easy transport and compact storage.

Swing-In/Out, Height-Adjustable & Removable Foot Rests

Facilitate smooth user transfers and enable optimal positioning to accommodate changing needs.

Height-Adjustable & Removable Armrests

Personalise height for comfort and support and removable for side transfers.

Durable Nylon Upholstery

Cushioned seat and backrest can be further enhanced with contoured padded overlay (WCA848330).

Depth-Adjustable Seating with Rear Angle Adjustability

Ensures accurate positioning and customisation for improved user comfort.

Quick-Release 20" Solid Rear Wheels

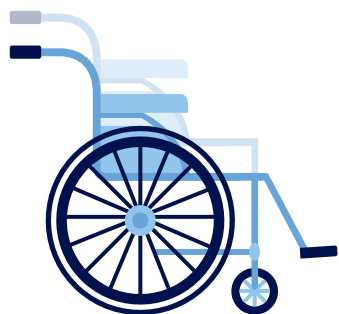
Proportionally smaller rear wheels assist with arm propulsion and reduce overall weight for transport and storage.



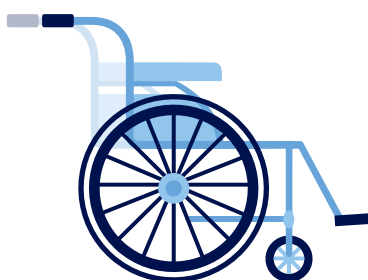
View our Aspire Wheelchair
Accessories Range



ADJUSTMENTS



Seat & Backrest Height



Seat Depth



Backrest Angle

EVOKE 2 YOUTH WHEELCHAIR	Seat Width mm / in	Seat Depth mm / in	Seat Height mm / in	Overall Width mm / in	Backrest Height mm / in	Armrest Height mm / in	Min. Chair Weight kg / lbs	SWL kg / st
MWS449570	350 / 13.8	350 – 425 / 13.8 – 16.7	440 – 480 / 17.3 – 18.9	560 / 22.1	430 – 490 / 16.9 – 19.3	205 – 225 / 8 – 8.7	14.8 / 32.6	150 / 23.6

*Range of motion dimensions are accurate to a +/-10mm tolerance

ASFY123.6 010425