



KNEE WALKER

USER MANUAL



TABLE OF CONTENTS

Thank you for choosing this Aspire Knee Walker.

This product has been specifically designed to offer comfort, support and safety. The Aspire Knee Walker is suitable for indoor and outdoor use and provides stable support for those with lower leg injuries.

It is important that you read this user manual carefully before using your new knee walker.

1. Intended Use _____	4
2. Warnings _____	4
3. Product Specifications _____	5
4. Components & Features _____	5
5. Instructions for Use _____	6
6. Care & Maintenance _____	8
7. Compliance _____	8
8. Warranty _____	9
9. Service Maintenance & Customisation _____	9

1. INTENDED USE

The Aspire Knee Walker is a medical device intended for use by individuals with below-the-knee injuries. The Aspire Knee Walker is intended to provide support for one leg only while using the other leg to push the user around at a slow walking pace. It is intended to evenly split the user weight between the knee walker and the uninjured leg. It is not intended as a chair, wheelchair, patient transport device, standing aid, recreational scooter or trolley.

2. WARNINGS



The Aspire Knee Walker is NOT a toy.

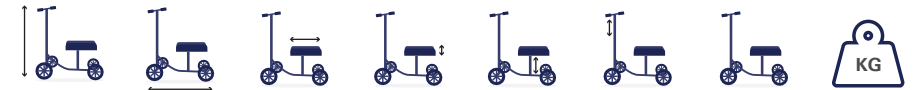
Serious injury or harm may occur unless the following is followed:

- DO NOT use if you have difficulty balancing.
- DO NOT use as a standing aid.
- DO NOT use as a chair or wheelchair.
- DO NOT use on stairs, steps, steep slopes, escalators or moving walkways.
- DO NOT use over uneven terrain.
- DO NOT use to go faster than a slow walking pace.
- DO NOT steer the unit sharply while moving.
- DO NOT stand or sit on the unit.
- DO NOT use in showers, bathroom, pools, wet or slippery surfaces.
- DO NOT use if any part of the scooter is broken, damaged or missing.
- DO NOT use under the influence of alcohol or illicit substances. Consult a medical professional or Doctor for advice if under medication.
- DO NOT attempt to replace the wheels or castors of your knee walker. If they are faulty or require replacement please contact an authorised repairer.
- ENSURE that your knee walker is opened fully (tiller locked into place) prior to use.
- SEEK ADVICE from a trained health care professional or approved Aspire retailer representative for height adjustment of this product.

The safe working load of the Aspire Knee Walker is 145kg.

3. PRODUCT SPECIFICATIONS

KNEE WALKER



OVERALL HEIGHT	OVERALL WIDTH	KNEE PAD WIDTH	KNEE PAD DEPTH	KNEE PAD HEIGHT	HANDLE HEIGHT	WALKER WEIGHT	S.W.L
810-1050mm	420mm	150mm	345mm	400-570mm	810-1050mm	10kg	145kg

4. COMPONENTS & FEATURES



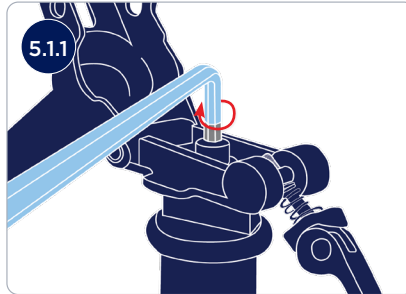
KNEE WALKER

1	Rustproof, robust aluminium frame provides durability and stability whilst remaining very light to manoeuvre and transport.
2	Suitable for lower leg injuries.
3	Allows even distribution of body weight by supporting half of the weight on the device and the other half on the non-injured leg.
4	Cushion platform to support both the injured leg and ankle to ensure comfort.
5	Designed for easy steering and stopping, with ergonomic adjustable hand brakes for controlled movement and safety.
6	Easy wipe-clean surfaces.
7	Handle height adjustable to suit user requirement.
8	Easy folding mechanism facilitates storage and transportation.
9	Swiveling front castor wheels increase manoeuvrability.
10	8" solid, puncture-proof wheels provide increased manoeuvrability over various surfaces.
11	Available in matte black.

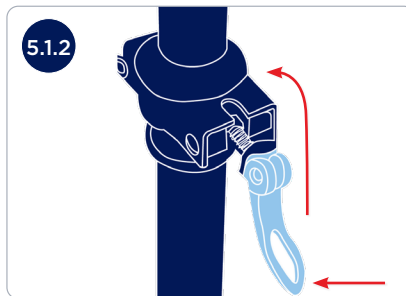
5. INSTRUCTIONS FOR USE

5.1 ASSEMBLY

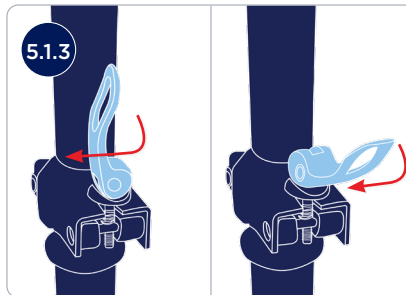
5.1.1 Tighten the allen screw with the allen key provided.



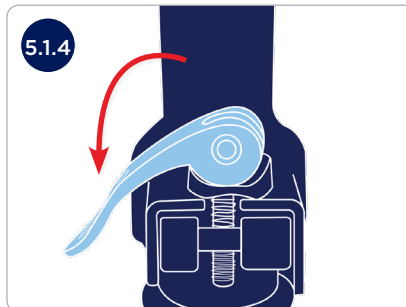
5.1.2 Slide hand bolt to the left and lift up fix handle bar to the upright position.



5.1.3 Tighten bolt by turning in a clockwise direction.



5.1.4 Lock handbolt to finish the assembly.



5.2 HAND BRAKE OPERATION

Do not use the Knee Walker if the brake system is not working properly.

- The Knee Walker brake works like a brake on a bicycle.
- It has a 'handbrake' lock as well.
- Pull the brake lever toward the handle bar to apply brakes.
- To lock, apply the brake lever and press down the lock button. Lock button will stay down and brake will be locked.
- To release brake lock, pull lever towards handle bar.



5.3 HAND BRAKE ADJUSTMENT

- For minor adjustment, the brake adjuster located on the handbrake can be used. Keep the cable adjuster nut against the hand brake.
- If further adjustment is required, apply the same method of adjustment at the lower cable adjuster.
- As you adjust the cable adjuster and the adjuster nut away from each other, the brakes will tighten, and as you adjust them closer, the brakes will loosen.

5.4 HANDLE HEIGHT ADJUSTMENT

- The handle height can be adjusted by releasing the hand wheel bolt on the steering shaft and setting it to the required height. Push the lock tab back to tighten.



5.5 SEAT HEIGHT ADJUSTMENT

- The hand wheel bolt under the seat enables setting the required seat height.



6. CARE & MAINTENANCE

MAINTENANCE SCHEDULE

Weekly	Periodically	Yearly	Serviceable Components
<ul style="list-style-type: none">• Check brakes for malfunction• Check all wheels and castors for loose bolts & nuts	<ul style="list-style-type: none">• Check handgrips for wear• Check frame bolts are secure• Check folding hinge bolts are secure• Check front and rear axle bolts are secure• Check for wear or cracks• Check wheels for splitting or damage• Check knee cushion for wear	<ul style="list-style-type: none">• Once a year take your knee walker to an authorised repairer for a full check, clean, service and lubrication of all moving parts	<ul style="list-style-type: none">• Wheels• Hand grips• Brake Cables• Knee Cushion• Brake Handles• Bearings• Bolts and Nuts

7. COMPLIANCE

Aspire Knee Walkers are manufactured to strict quality control standards.

As part of Australian Standards compliance, safety stickers are located on the frame of this walker.

Please ensure that you familiarise yourself with these prior to use.

This product complies with Australian Standards ISO11199-2:2005. As the importer of this product, Aidacare maintains records of all testing reports and compliance certificates. All testing was completed by Novitatech.

Novitatech is an independent NATA accredited laboratory and is widely acknowledged as the leading provider of safety testing services for walkers and mobility products in Australia.

8. WARRANTY

Aidacare provides a 12 month warranty subject to reasonable wear and tear. Aidacare is bound by Australian Consumer Law in respect to “Warranty Against Defects” on this product. A copy of the Aidacare “Warranty Against Defects” Statement is available on our homepage (www.aidacare.com.au). Any contact pertaining to warranty matters should be directed to Aidacare Customer Service on 1300 133 120 where support will be provided.

Should any part of the knee walker break, fatigue or show defects due to manufacturing issues or error, Aidacare will replace the affected components free of charge and reserves the right to replace the entire seat walker should this be more economical for Aidacare. All warranties are back to base, which requires the user to return the seat walker or the affected part to an Aidacare Service Centre. For the location of your nearest service centre call 1300 133 120.

For all warranty claims, proof of purchase must be provided by the customer. Aidacare warranty does not cover any product or component damaged or broken due to neglect or misuse. Aidacare does not honor this warranty for any product that has been modified from its original state. Aidacare will bear no freight costs for the return of any items under warranty.

The suggested service period for all seat walkers is every 12 months.

9. SERVICE MAINTENANCE & CUSTOMISATION

To arrange a service or customisation for your walker, please call Aidacare on 1300 133 120.

AIDACARE PTY LTD

Building 3A, 1 Moorebank Avenue,
Moorebank NSW Australia 2170
1300 133 120 | www.aspirecare.com.au

MADE IN PRC