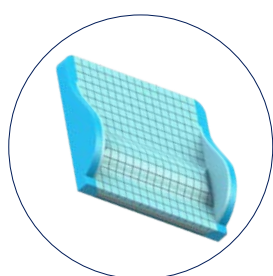




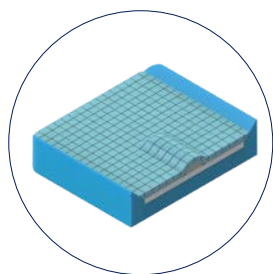
REHAB RX2 JNR

TILT-IN-SPACE WHEELCHAIR

Designed to provide advanced postural support and pressure care for children. It offers various adjustable features for improved positioning and comfort, making it suitable for children with specific care needs.



**CONTOURED
BACKREST**



**CONTOURED
SEAT**

CRASH TEST
APPROVED
AS/NZS 3696.19

1 YEAR WARRANTY
Components

2 YEAR WARRANTY
Frame



Sturdy Frame

Rigid steel construction for maximum durability

Quick-Release Wheels

Solid 20" tires with easy height and depth adjustment for versatile terrain handling

Height-Adjustable Castors

6" wheels for smooth, adaptable maneuverability

Dual Braking System

Attendant-operated drum brakes and push-to-lock handbrakes for enhanced safety

Ergonomic Headrest

Height, depth, angle, and width adjustments; fully removable for user flexibility

Breathable Upholstery

PU multi-stretch fabric covers for comfort and airflow

Premium Cushioning

Multilayer castellated back and seat cushions in breathable PU for pressure relief

Lightweight Design

Starts at 39.5 kg for easier transport and handling



View our Aspire Wheelchair
Accessories Range



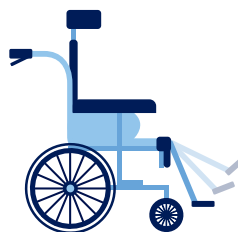
ADJUSTMENTS



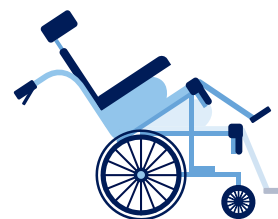
Backrest Height



Seat & Backrest Depth



Elevating Legrest



Tilt-In-Space
26° Tilt | 30° Recline

REHAB RX2 JNR WHEELCHAIR

	Seat Width	Seat Depth	Front Seat Height	Rear Seat Height	Overall Width	Backrest Height	Armrest Height	Min Chair Weight	SWL
	mm / in	mm / in	mm / in	mm / in	mm / in	mm / in	mm / in	kg / lbs	kg / st
MWS449630	320 - 370 / 13 - 15	440 - 490 / 17.3 - 19.29	410 - 440 / 16.1 - 17.3	400 - 475 / 15.8 - 18.7	600 / 23.6	460 - 710 / 18 - 28	310 - 460 / 12.2 - 18.1	39.5 / 87	180 / 28.3

Note: Range of motion dimensions are accurate to a +/-10mm tolerance

ASFY142.2 090425