



# HUNTINGTON'S ELECTRIC BED



1300 133 120 | [aidacare.com.au](http://aidacare.com.au)


Distributed by  
 **aidacare**  
HEALTHCARE EQUIPMENT

# ROBUST DESIGN

Made in Germany, the Careline Huntington's bed is of the highest quality. The beds are sturdy in construction and built to resist constant movements by the user. The mattress is waterproof and designed to reduce the risk of shearing.

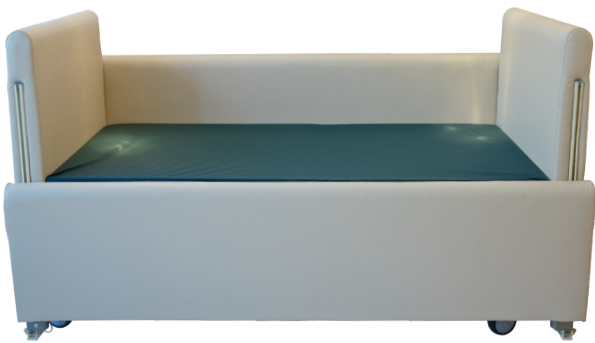
The bed offers high low functions, backrest, and leg support in addition to being fully padded for the protection of the user. This padding extends to the headboard, footboard, and side rails.

The padded rails are electrically operated to minimise risk to users and also carers. The castors are lockable by a foot control.

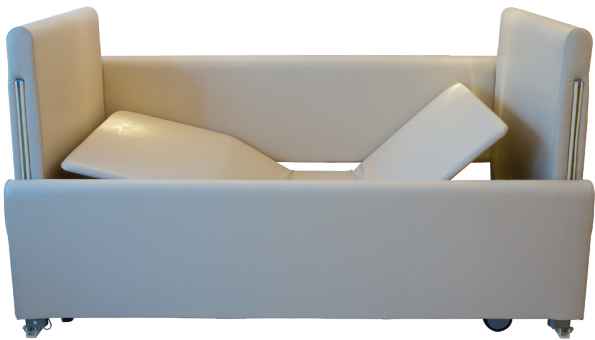

Registered in the ARTG,  
AUST R ARTG 300047

### SUITABLE FOR:

- Huntington's disease
- Cerebral palsy
- Multiple sclerosis
- Restless legs
- People needing padded protection from thrashing





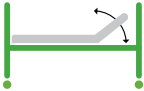
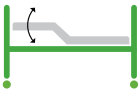


Lay flat position



Raised backrest and knee bend

### FEATURES

- Rounded edges
- Padded sides are electrically powered
- Waterproof vinyl covers
- Fully padded at head, feet, and sides
- No gaps to ensure limbs do not get caught
- Hi-lo electrically adjustable bed
- Suitable for community and nursing homes
- Robust German design

<div> HUNTINGTON'S ELECTRIC BED  BEB046010 </div>	BED HEIGHT RANGE (mm)	BED WIDTH (mm)	BACKREST INCLINE/DECLINE (mm)	KNEE BEND INCLINE/DECLINE (mm)	MATTRESS DIMENSIONS (mm)	SWL (KG)
	 430 - 610	 900 - 1100	 0 - 55°	 0 - 40°	 2000 x 900	 150